



Innovation  
that excites

# NISSAN NAVARA



# ~~WE MAKE PROMISES.~~ WE KEEP PROMISES.

INTRODUCING NISSAN ASSURED, IT'S MORE THAN A PROMISE. AS PART OF THE NISSAN FAMILY YOU'RE GUARANTEED OUR COMMITMENT TO CUSTOMER CARE. A LASTING BOND BETWEEN YOU, YOUR VEHICLE AND THE NISSAN BRAND. THAT'S OUR PROMISE.

## CUSTOMER EXPERIENCE

We promise to make your Nissan experience one to cherish, from your delivery day and everyday after, our commitment is to deliver a service experience you can trust – and believe in.

## CUSTOMER SUPPORT ROADSIDE ASSISTANCE

We keep you on the road 24/7. Should anything unexpected happen we guarantee you 24-hour roadside assistance, no matter the age of your Nissan, because it's still a Nissan. Just call **0800 NISSAN (46 77 26)** anywhere, anytime. Terms and Conditions do apply.

## LICENCE RENEWAL REMINDER

We'll remind you in advance so you can keep your licence disk up to date.

## 3 YEAR OR 90 000KM SERVICE PLAN

For the first 3 years or 90 000km of driving your car, whichever comes first, you can rest easy knowing that our promise to you is a kept one. We'll make sure your car is running smoothly and always on the road.

## 6 YEAR OR 150 000KM WARRANTY

As long as your car is under our warranty, we'll always have you covered if anything goes wrong. You don't need to stress for the first 6 years or 150 000km, whichever comes first.

## SERVICE AND REPAIRS FREE VEHICLE HEALTH CHECK

We'll give your car a free health check on every major and minor service prior to any work being carried out, so you know exactly what needs to be done, and how much it will cost.

## COMPETITIVELY PRICED PARTS

We deliver the highest care for your Nissan by fitting only Nissan Genuine Parts. The expertise of our Nissan trained teams will also guarantee best value-for-money by finding the most competitively priced part for your local dealer.

## COURTESY CAR

We will arrange a courtesy car for all warranty repairs should the components required not be available within 48 hours.

150 000KM/  
**6** YEAR  
BEST IN CLASS  
WARRANTY  
WITH NISSAN ASSURED



NISSAN  
ASSURED

More than a Promise

Call **0800 NISSAN (64 77 26)**  
or visit [www.nissan.co.za](http://www.nissan.co.za) for more information.

Tough, agile and stylish, the Nissan NAVARA is the latest in a long line of Nissan bakkies - we produced our first in 1935. Along the way Nissan pioneered the KingKab in 1977, the innovative Utili-track tie down system in 2005, and now a leader in the use of a coil-spring rear suspension on a 1-ton bakkie. With **14 MILLION NISSAN BAKKIE OWNERS** blazing trails in **180 COUNTRIES** around the world, our proud legacy of reliability and innovation continues today. As long as there's adventure on the horizon, Nissan will take the lead.



MORE THAN  
**80**  
YEARS  
OF TOUGH



INTRODUCING THE  
ALL-NEW NISSAN NAVARA.  
**RUGGED  
REDEFINED**





## DEVOURS ROADS, SIPS FUEL.

The Nissan NAVARA shows how power, acceleration and fuel efficiency can not only coexist, but thrive. Powered by an advanced twin-turbo diesel engine with a wide torque curve, the small turbo gets you moving at low engine speeds while the larger one delivers linear, constant power for longer. Class-leading fuel efficiency is further achieved by using low friction components, reduced mass, wide range gear transmissions and enhanced aerodynamics.

## EXCEPTIONAL FUEL EFFICIENCY

### TWIN-TURBO DIESEL

Generating more power and torque and with fuel savings up by 27%, the new, improved 140kw twin-turbo diesel engine with 6-speed manual or 7-speed automatic transmission delivers best in class acceleration and efficiency at the same time.

POWER	140 KW
TORQUE	450 NM @ 1500-2500 RPM
ENGINE DISPLACEMENT	2298 CC
FUEL TYPE	DIESEL (Max 50ppm Sulphur)
FUEL ECONOMY	FROM 6,5l/100km
EMISSIONS (CO <sub>2</sub> )	FROM 172 G/KM

# TAKE YOUR OWN PATH.

Whether it's the depths of the bush or the concrete jungle, the Nissan NAVARA is always in its element.



APPROACH  
ANGLE  
**33°**

DEPARTURE  
ANGLE  
**27.9°**

MIN GROUND  
CLEARANCE  
**226 mm**



## Shift-on-the-fly 4-Wheel Drive

The Nissan NAVARA's 4WD system is electronically controlled via a rotary switch on the dash. The system switches between 2WD and high range 4WD (4H) with the twist of a dial up to speeds of 100km/hr. Select low range 4WD (4LO) for mud, sandy or difficult terrain.



## 4-Wheel Active Brake Limited Slip (ABLS)

ABLS individually controls each of the four wheels to optimise traction in challenging conditions, similar to the benefits that a limited slip differential provides. The biggest advantage of ABLS is that it works on all four wheels, not just the two primary driven wheels.



## Electronic Locking Rear Differential

When the road gets tough, push the button to activate the electronic locking rear differential, which delivers equal power to both rear wheels to boost traction and keep you moving forward.



## Hill Start Assist (HSA) and Hill Descent Control (HDC)

Facing steep terrain? Now you can do it with more confidence and control. On an incline, Hill Start Assist keeps you from rolling backwards when you're accelerating from a stop. And Hill Descent Control helps you maintain a steady speed, so you get back down a steep incline more safely.

## ROCK SOLID FROM THE GROUND UP.

As tough as they come, the Nissan NAVARA's fully boxed ladder frame is made with rugged high-tensile strength steel for improved structural rigidity and more torsional stiffness giving better handling and ride comfort without compromising load carrying ability.



**FULLY  
BOXED.  
FULLY  
CAPABLE.**

## EXCEPTIONAL COMFORT, SUPERIOR HANDLING.

The Nissan NAVARA is the first mainstream bakkie with a rear coil suspension like large SUVs. The heavy duty 5-link coil suspension versus the traditional rear leaf suspension offers exceptional ride comfort, absorbing the bumps in the road. In addition, the high lateral rigidity with springs, stabiliser and dampers tuned for optimum performance improves steering properties for superior handling and cornering ability on gravel and tar.



**5**  
-LINK  
COIL  
REAR  
SUSPENSION





## PLENTY OF POWER TO PULL.

The boat can definitely come along. Capable towing is engineered right into the Nissan NAVARA, starting with its full-length, fully boxed ladder frame. Add to that heavy duty components, including braking, transmission and cooling systems, plus plenty of power and low-end torque, and you're ready to pull some serious weight.



**3.5T**  
BRAKED  
TOWING CAPACITY

## LOAD UP WITH VERSATILITY.

The Nissan NAVARA is engineered to handle tough jobs and heavy payloads for work or play. A lighter tailgate makes loading and unloading simple. Ensuring any cargo is secure and safe is easy, thanks to Nissan's revolutionary Utili-track tie down system. Heavy duty moveable cleats can be locked anywhere in special tracks and on the two sides of the bakkie bed, so you can tie down any load, of any shape or size with ease.

**1T** PAYLOAD  
CAPACITY



## RIDE FIRST CLASS EVERY DAY.

In the Nissan NAVARA, you'll find unexpected comfort and space from every seat. Astronaut-inspired zero gravity seats create neutral posture and improved blood flow to help make those long rides a lot more comfortable. Plus, Dual Zone Climate Control means you and your passengers can each keep things as cool or warm as you like. The circular side vents pinpoint exactly where you want the air to go – which helps out everyone on board, including rear passengers who have their own vents and driver controlled access to a rear power sliding window at the back. The LE grade comes with optional leather seats with 8-way power control and seat heat function.



## INNOVATION THAT'S RIGHT IN FRONT OF YOU.

All controls are in exactly the right spot for quick mastery of your environment. The sporty, leather-wrapped steering wheel with audio controls lets you operate cruise control and the audio system while your hands stay right where they should. The Bluetooth hands free phone system lets you make and take calls with ease.

## NAVIGATION SYSTEM COMES STANDARD

## MASTER YOUR DOMAIN.

The Nissan NAVARA Advanced Drive-Assist Display (ADAD) serves up all the driving information you need in one place. From fuel economy to song tracks, the intuitive 3D depth and tilt design lets you take it all in at a glance.



### ONBOARD NAVIGATION SYSTEM

Radio with RDS that stores 30 stations, DVD/VCD/CD/MP3/MPEG4 format, USB function, Bluetooth with audio streaming, reverse camera, touch screen, Navigation with 3D mapping and live traffic update - all operated from your steering wheel.

# NISSAN SAFETY SHIELD SURROUND YOURSELF WITH CONFIDENCE.

**PROTECT, RESPOND, MONITOR.** Wouldn't it be smart if you had the confidence you need for every part of your drive? The Nissan Safety Shield is a comprehensive approach to safety that guides the engineering and development of every vehicle we make. The features described here are just some of many on your Nissan NAVARA, helping to protect you and yours by focusing on three key areas: keeping an eye on your vehicle's systems and the surroundings, assisting in handling unexpected situations, and helping to keep you safe in the unfortunate event of an accident.

**Traction Control System (TCS).** TCS helps you keep a better grip on the road. It senses when a drive wheel starts to slip and reduces engine power or applies brake pressure to help restore traction.

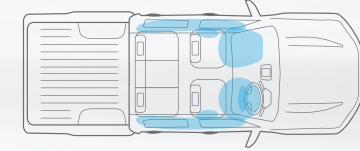
**Zone Body Concept.** Nissan's Zone Body Concept helps absorb the impact and protect the passenger compartment during a collision. It features a high-intensity cabin structure with crossmembers and reinforcements, front and rear crumple zones, and an energy-absorbing steering column.

**Electronic Limited Slip Differential (eLSD).** In low-traction conditions (mud, dirt, bumps, slopes, etc.) the vehicle senses if one wheel is slipping and automatically slows that wheel using the brakes to regain traction and keep you moving. Works on all 4 wheels.

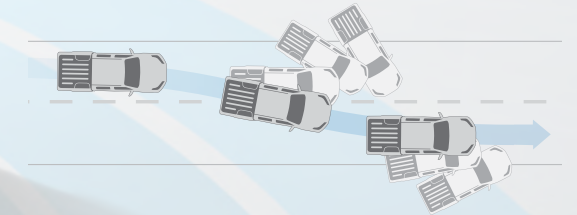


In the commitment to "Real World Safety", Nissan pursues innovation as part of its Safety Shield concept. Based on the idea that cars should help protect people, advanced, proactive safety technologies help driver and passengers to avoid danger and injury in a wide range of circumstances.

All Nissan NAVARA models include reverse camera standard & parking sensors on the LE model.



**7 Airbags Standard.** Driver and passenger airbags in the front, two side-impact air bags mounted in the front seats, two side-impact curtain air bags mounted in the roof and a driver knee airbag.



**Vehicle Dynamic Control (VDC).** VDC monitors your steering, braking and the vehicle's stability and, if needed, will reduce engine output and apply brake pressure to specific wheels in order to keep you on your intended path.

**Anti-lock Braking System (ABS).** ABS prevents the wheels from locking under hard braking, allowing you to stop quicker and at the same time steer around obstacles.

**Electronic Brakeforce Distribution (EBD).** EBD automatically sends extra force to the rear brakes when it detects there's additional weight in the back.

## NOT JUST GOOD LOOKS.

The Nissan NAVARA delivers smart comfort and refinement while maintaining the Nissan NAVARA's acclaimed toughness with its off-road ability, durability and load capacity. With its confident, muscular looks, this is a bakkie that means business. The Nissan NAVARA integrates go anywhere driving capability with Nissan Crossover levels of comfort. That is why only the finest accessories are approved by Nissan to compliment your Nissan NAVARA.



NISSAN  
APPROVED  
ACCESSORIES

# STAY IN SHAPE WITH NISSAN APPROVED ACCESSORIES.

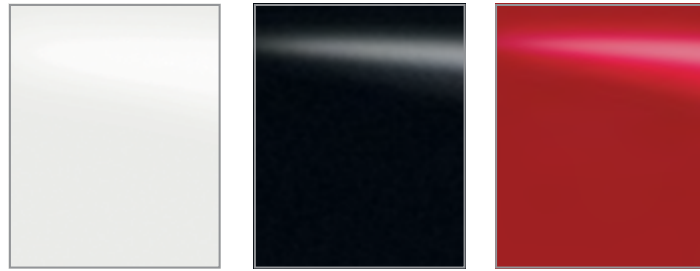
Nissan Approved Accessories are specifically designed and manufactured to fit the Nissan NAVARA to ensure optimal vehicle performance in support of your vehicle warranty. Nissan accessories comply with Nissan Accessory Design Standards to ensure best performance, durability, quality and support. Our core styling items have been engineered, tested and approved by Nissan's Global Design Centre. This means fitting accessories from Nissan approved dealerships maintains the vehicle's safety and integrity and will not affect the 6-year or 150 000km warranty.



The all-new Nissan NAVARA retains its 5-STAR ANCAP safety rating with Nissan's approved bull bar fitted, only available through a Nissan approved dealership.

ACCESSORIES	MODEL GRADE APPLICATION	
	SE	LE
<b>STYLING - EXTERIOR</b>		
Decal kits (4 options to choose from)	X	X
Black alloy wheels (various designs available)	X	X
Headlamp surrounds	X	X
Tail lamp surrounds	X	X
Fender flares	X	X
Nudge bar - alloy	X	X
Nudge bar - black	X	X
Sports bar - alloy	X	X
Sports bar - black	X	X
<b>UTILITY</b>		
Replacement bumper - alloy	X	X
Replacement bumper - black	X	X
Tow bar with LED down light	X	X
Cattle rails	X	X
Rubberising	X	X
Canopies - fibreglass and stainless steel	X	X
<b>PROTECTION</b>		
Seat covers for leather seats - grey or black		X
Seat covers for cloth seats - grey or black	X	
Door sill scuff plates - stainless steel	X	X
Door sill scuff plates - moulded plastic	X	X
Load box rubber mat	X	X
Headlight covers - clear	X	X
Bonnet guard - matt black	X	X
Window visors - matt black	X	X
<b>SAFETY/SECURITY</b>		
Tonneau cover - for roll bar and without roll bar	X	X
Spare wheel lock	X	X
Window film	X	X
<b>IRONMAN 4X4 OFF-ROAD ACCESSORIES</b>		
Steel side steps	X	X
Steel side steps & rails	X	X
9500lb Winch - Steel Cable	X	X
9500lb Winch - Synthetic Rope	X	X
Heavy duty bull bar	X	X
Recovery points	X	X
Heavy duty rear steel bumper	X	X
7" blast combo LED spot light	X	X
Under body protection plates	X	X
<b>IRONMAN 4X4 OFF-ROAD UPGRADE KIT</b>		
Heavy duty bull bar	X	X
Performance coil springs	X	X
Steel side steps & rails	X	X
Recovery points	X	X
Trailer wiring harness	X	X
Heavy duty rear steel bumper	X	X
Under body protection plates	X	X

## COLOURS



WHITE - QM1 (S)

BLACK - G42 (S)

RED - AX6 (S)

M: Metallic  
S: Solid  
P: Pearl



GREY - K21 (M)(P)

SILVER - K23 (M)

PEARL WHITE - QX1 (M)(P)

ORANGE - EAU (M)(P)

DARK BLUE - RAA (M)(P)

DARK BROWN - CAQ (M)

## WHEELS

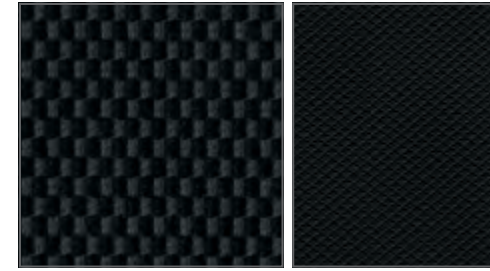


16" ALLOY

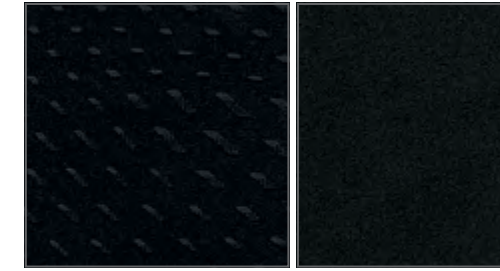


18" ALLOY

## TRIMS



GRAPHITE CLOTH (SE grade)



GRAPHITE CLOTH (LE grade)



OPTIONAL LEATHER ACCENTED SEATS  
(with heating function and 8-way power).

## DIMENSIONS

A: Overall height: 1 840 MM (with roof bars)  
B: Overall length: 5 255 MM  
C: Overall width: 2 085 MM (with opened mirrors)  
Ground clearance: 226MM (SE), 229MM (LE)

**BED**  
Height: 474 MM (tailgate lift height)  
Length: 1 578 MM (at floor)  
Width: 1 560 MM (max)



C

B

A



Model		2.3D SE 4X4 DC MT	2.3D LE 4X4 DC MT	2.3D LE 4X4 DC AT
Body Type		DC	DC	DC
Drivetrain		4X4	4X4	4X4
Fuel Type		Diesel	Diesel	Diesel
Engine		2.3D	2.3D	2.3D
Grade		SE	LE	LE
Transmission		MT	MT	AT
Seating capacity		5	5	5
<b>ENGINE</b>				
Engine code		YS23DDT	YS23DDT	YS23DDT
Engine displacement	cc	2298	2298	2298
Bore and stroke	mm	85.0 x 101.3	85.0 x 101.3	85.0 x 101.3
Compression ratio		15.4:1	15.4:1	15.4:1
Cylinder head		Aluminium alloy	Aluminium alloy	Aluminium alloy
Number of cylinders		4	4	4
Turbo charged		twin-turbo diesel	twin-turbo diesel	twin-turbo diesel
Maximum power	kW/rpm	140@3750	140@3750	140@3750
Maximum torque	Nm/rpm	450@1500-2500	450@1500-2500	450@1500-2500
Fuel supply		Common Rail Direct Injection	Common Rail Direct Injection	Common Rail Direct Injection
<b>FUEL</b>				
Fuel Requirement - Diesel Max 50ppm sulphur		Standard	Standard	Standard
Fuel tank capacity	ℓ	80	80	80
Fuel consumption (combined cycle)	ℓ/100km	6,5	6,5	7,0
CO2 emission (combined cycle)	g/km	172	172	186
Emission standard		Euro V	Euro V	Euro V
<b>TRANSMISSION</b>				
Transmission		6-speed	6-speed	7-speed
Transfer case		Standard	Standard	Standard
Ratio 1st		4,685	4,685	4,886
Ratio 2nd		2,478	2,478	3,169
Ratio 3rd		1,623	1,623	2,027
Ratio 4th		1,207	1,207	1,411
Ratio 5th		1	1	1
Ratio 6th		0,808	0,808	0,864
Ratio 7th		-	-	0,774
Ratio Reverse		4,709	4,709	4,041
Final drive		3,692	3,692	3,357
Electronic rear differential lock		Standard	Standard	Standard
<b>DIMENSIONS</b>				
Overall length	mm	5255	5255	5255
Overall width (excluding mirrors)	mm	1850	1850	1850
Overall height (without roof rail)	mm	1830	1865	1865
Wheelbase	mm	3150	3150	3150
Ground clearance	mm	226	229	229
Front track	mm	1570	1570	1570
Rear track	mm	1570	1570	1570
Front overhang	mm	870	870	870
Rear overhang	mm	1235	1235	1235
Turning circle (kerb to kerb)	m	12,4	12,4	12,4
Approach angle	Degrees	33	33	33
Departure angle	Degrees	27,9	27,9	27,9
Ramp break-over angle	Degrees	25,2	25,2	25,2
Load box length - floor	mm	1503	1503	1503
Load box length - top	mm	1465	1465	1465
Load box width - floor	mm	1560	1560	1560

Model		2.3D SE 4X4 DC MT	2.3D LE 4X4 DC MT	2.3D LE 4X4 DC AT
<b>DIMENSIONS CONTINUED</b>				
Load box width - top	mm	1490	1490	1490
Load box width - between wheel arches	mm	1130	1130	1130
Load box width - tailgate opening	mm	1360	1360	1360
Load box height	mm	474	474	474
<b>MASS/CAPACITY</b>				
Gross Combination Mass (GCM)	kg	5910	5910	5910
Gross Vehicle Mass (GVM)	kg	2910	2910	2910
Tare mass	kg	1866	1875	1881
Payload	kg	1002	967	961
Load box capacity	ℓ	1111	1111	1111
Gross axle mass (front - laden)	kg	1320	1320	1320
Gross axle mass (rear - laden)	kg	1750	1700	1700
Maximum towing capacity unbraked	kg	750	750	750
Maximum towing capacity	kg	3500	3500	3500
<b>HANDLING/MECHANICAL</b>				
Power steering		Standard	Standard	Standard
Front suspension - independent double-wishbone		Standard	Standard	Standard
Stabiliser bar - front		Standard	Standard	Standard
Rear suspension - 5-link coil		Standard	Standard	Standard
Hill Start Assist (HSA)		-	Standard	Standard
Hill Descent Control (HDC)		-	Standard	Standard
<b>SAFETY/SECURITY</b>				
Front brakes - ventilated discs		Standard	Standard	Standard
Rear brakes - drum		Standard	Standard	Standard
Anti-lock Braking System (ABS)		Standard	Standard	Standard
Electronic Brakeforce Distribution (EBD)		Standard	Standard	Standard
Traction Control System (TCS)		Standard	Standard	Standard
Vehicle Dynamic Control (VDC)		Standard	Standard	Standard
Brake Limited Slip Differential (BLSD)		Standard	Standard	Standard
Brake Assist (BA)		Standard	Standard	Standard
Driver and front passenger front-impact SRS airbags		Standard	Standard	Standard
Driver and front passenger side-impact SRS airbags		Standard	Standard	Standard
Driver knee airbag		Standard	Standard	Standard
Front to rear SRS curtain airbags		Standard	Standard	Standard
3-Point Emergency Locking Retractor (ELR) seatbelts (all seats)		Standard	Standard	Standard
Driver and front passenger seatbelts with load limiters and pre-tensioners		Standard	Standard	Standard
Driver and front passenger seatbelt height adjustment		Standard	Standard	Standard
Driver and front passenger seatbelt warning		Standard	Standard	Standard
Second row seatbelt alert		Standard	Standard	Standard
Second row child restraint anchorage points (3)		Standard	Standard	Standard
Reverse camera		Standard	Standard	Standard
Reverse sensors		-	Standard	Standard
LED projector headlights		Standard	Standard	Standard
Automatic on/off headlights - twilight detection		Standard	Standard	Standard
LED signature daytime running lights		Standard	Standard	Standard
Collapsible steering column		Standard	Standard	Standard
Door side intrusion bars		Standard	Standard	Standard
Zone body structure		Standard	Standard	Standard
Front and rear crumple zones		Standard	Standard	Standard
Front variable intermittent windscreen wipers		Standard	Standard	Standard
Child safety rear door locks		Standard	Standard	Standard
Door ajar warning light (all doors)		Standard	Standard	Standard
Electromagnetic lockable fuel lid		Standard	Standard	Standard

Model	2.3D SE 4X4 DC MT	2.3D LE 4X4 DC MT	2.3D LE 4X4 DC AT
<b>SAFETY/SECURITY CONTINUED</b>			
Lockable rear tailgate (key)	Standard	Standard	Standard
Nissan Anti-Theft System (NATS) vehicle immobiliser	Standard	Standard	Standard
Vehicle Security System (VSS) alarm	Standard	Standard	Standard
Nissan DataDoT anti-theft identification system	Standard	Standard	Standard
<b>COMFORT and CONVENIENCE</b>			
Graphite cloth seats	Standard	Standard	Standard
6-way driver seat with manual adjustment	Standard	Standard	Standard
Front passenger seat with manual slide and recline	Standard	Standard	Standard
Leather heated seats (Driver seat with 8-way power adjustment)	-	Optional	Optional
Front headrests with up/down adjustment	Standard	Standard	Standard
Second row headrests (2)	Standard	Standard	Standard
Flip up rear seats	Standard	Standard	Standard
Cruise control	Standard	Standard	Standard
Manual tilt adjustable steering column	Standard	Standard	Standard
Air-conditioning - Manual	Standard	-	-
Air-conditioning - Dual zone climate control	-	Standard	Standard
Rear air vents in centre console	Standard	Standard	Standard
Remote keyless entry	Standard	Standard	Standard
Intelligent Key with remote keyless entry	-	Standard	Standard
Push button engine start	-	Standard	Standard
Leather accented steering wheel, shift lever and handbrake	Standard	Standard	Standard
Chrome interior door handles	Standard	Standard	Standard
Front passenger assist grip	Standard	Standard	Standard
Second row passenger assist grips (2)	Standard	Standard	Standard
Centre console storage	Standard	Standard	Standard
Glove compartment	Standard	Standard	Standard
Dashboard upper storage tray	Standard	Standard	Standard
Front door storage pockets	Standard	Standard	Standard
Rear door storage pockets	Standard	Standard	Standard
Front row cup holders (4) and bottle holders (2)	Standard	Standard	Standard
Driver and front passenger seat back pockets	-	Standard	Standard
Driver and front passenger sun visors	Standard	Standard	Standard
Driver and front passenger illuminated vanity mirrors	Standard	Standard	Standard
Sunglasses holder (overhead console)	Standard	Standard	Standard
Power windows with driver auto up/down button	Standard	Standard	Standard
Day/night rear view mirror with electric anti-dazzle and compass	Standard	Standard	Standard
Interior room light	Standard	Standard	Standard
Front map lights (2)	Standard	Standard	Standard
Rear interior lights (2)	-	Standard	Standard
Front door operated interior lights	Standard	Standard	Standard
Illuminated ignition switch	-	Standard	Standard
12 volt power socket (3)	Standard	Standard	Standard
Floor carpet - front and rear	Standard	Standard	Standard
Rear power sliding window	Standard	Standard	Standard
Rear window de-mister	Standard	Standard	Standard
Speedometer, tachometer, odometer, trip meter	Standard	Standard	Standard

Model	2.3D SE 4X4 DC MT	2.3D LE 4X4 DC MT	2.3D LE 4X4 DC AT
<b>INSTRUMENTATION</b>			
Advanced Drive-Assist Display (Incl. Instant and average fuel economy, distance to empty, average speed)	Standard	Standard	Standard
Digital clock	Standard	Standard	Standard
Ambient temperature display	Standard	Standard	Standard
<b>AUDIO and CONNECTIVITY</b>			
CD player, AM/FM radio, AUX and USB connectivity	Standard	Standard	Standard
Steering wheel audio controls	Standard	Standard	Standard
Satellite Navigation with 3D Mapping and integrated colour display with touch screen	Standard	Standard	Standard
Speakers	6	6	6
Bluetooth® hands free phone system via steering wheel controls	Standard	Standard	Standard
Bluetooth® audio streaming	Standard	Standard	Standard
<b>EXTERIOR</b>			
Privacy glass (second row and rear window)	Standard	Standard	Standard
Front fog lights	Standard	Standard	Standard
2 channel Utili-Track™ system	-	Standard	Standard
Tie-down points inside bed (4)	Standard	-	-
12V outlet inside load box	Standard	Standard	Standard
Protective loadbox liner/rubberising	Optional	Optional	Optional
Side steps	Standard	Standard	Standard
Roof rails	-	Standard	Standard
Antenna	Standard	Standard	Standard
Door mirrors	Chrome	Chrome	Chrome
Heated door mirrors with power adjustment and manual folding	Standard	-	-
Heated door mirrors with power adjustment/folding and integrated LED indicator lights	-	Standard	Standard
Front bumper body colour	Standard	Standard	Standard
Rear bumper	Chrome	Chrome	Chrome
Door handles	Chrome	Chrome	Chrome
V-Motion front grille	Chrome	Chrome	Chrome
Alloy sports bar with integrated high mounted stop light	Optional	Optional	Optional
Rear spoiler with protective finisher	Standard	Standard	Standard
Front and rear mudflaps	Standard	Standard	Standard
Front towing hook	Standard	Standard	Standard
<b>WHEELS AND TYRES</b>			
Wheel size and type	16" Alloy	18" Alloy	18" Alloy
Tyre	255/70R16	255/60R18	255/60R18
Spare wheel	Full size (Steel)	Full size (Alloy)	Full size (Alloy)
<b>OWNERSHIP</b>			
Service interval	15 000 km	15 000 km	15 000 km
Service plan	3 year / 90 000 km	3 year / 90 000 km	3 year / 90 000 km
Warranty	6 year / 150 000 km	6 year / 150 000 km	6 year / 150 000 km

Optional equipment can result in an increase/decrease in the unladen weight and consequently affect the payload. Quoted payloads have been determined to allow for factory options or aftermarket solutions that are not accommodated in the standard delivery and services scope. The calculation of the actual payload of a vehicle is the difference between the gross vehicle mass and the curb mass and can only be determined by weighing the vehicle. Due to production tolerances/tyre sizes/type of running gear, the actual dimensions can differ slightly from the figures supplied in this brochure.

**LEGAL NOTICE**

Every effort has been made to ensure that the content of this brochure is correct at the time of going to print (December 2017). This brochure has been produced featuring prototype or accessorised vehicles exhibited at motor shows and, in accordance with the company's policy of continuously improving its products, Nissan South Africa reserves the right to change the specification and the vehicles described and shown in this brochure at any time. Nissan Dealers will be informed of any such modifications as quickly as possible. Please check with your local Nissan Dealer to receive the most up-to-date information. Due to the limitations of the printing processes used, the colours shown in this brochure may differ slightly from the actual colours of the paint and interior trim materials used. All rights reserved. Reproduction in whole or part of this brochure without the written permission from Nissan is forbidden. Quoted fuel consumption and emission values have been established using the prescribed method of measurement (United Nations Economic Commission for Europe "ECE" Regulation R101 in the current version) as required under current legislation. This data does not pertain to the specific vehicle and does not comprise part of the offer, but is supplied for the purpose of comparison between the various types of vehicles, in accordance with 1999/94/EC. Driving behaviour / conditions and other non-technical factors contribute towards a vehicle's fuel consumption and CO<sub>2</sub> emissions over and above the determined fuel efficiency of a vehicle.



**Nissan's commitment to the environment**

Nissan's environmental philosophy embraces people, vehicles and nature. In the pursuit of a sustainable mobile society, the Nissan Green Program aims to reduce the environmental impact of Nissan vehicles at every stage of the vehicle life cycle, while corporate activities address environmental challenges.

**NISSAN'S commitment to quality:** to provide all customers with a consistently high level of quality, Nissan applies the standard worldwide, to ensure that all Nissan owners enjoy peace of mind for the lives of their vehicles. The approach is based on quality from the customer's perspective on three key elements: 1. The expectation of a smooth driving experience with complete peace of mind. 2. The intangible appeal of a vehicle, its power to captivate and excite, with features that capture attention and imagination. 3. The level of attentiveness and service during the sales process, and long after the sale is concluded.

visit our website at: [www.nissan.co.za](http://www.nissan.co.za)

Phone us toll free on: 0800 NISSAN (647 726)

Follow Nissan on:

 /NissanSouthAfrica

 @Nissanza

DECEMBER 2017

BR17E – D23ZA3